

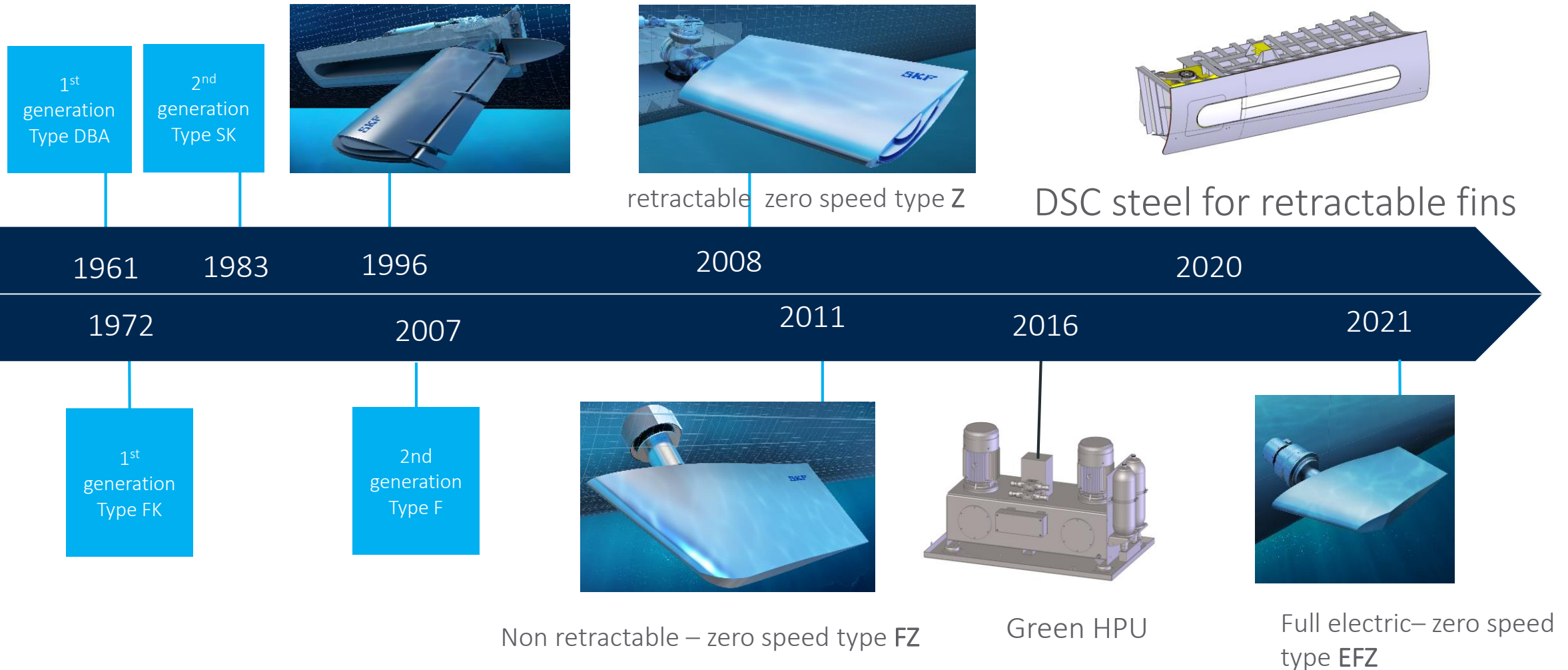
SKF®

SIMPLEX  
TURBULO

# Full Electric Fin stabilizer type „EFZ“



# A part of our DNA: stabilizing the maritime business since 1961



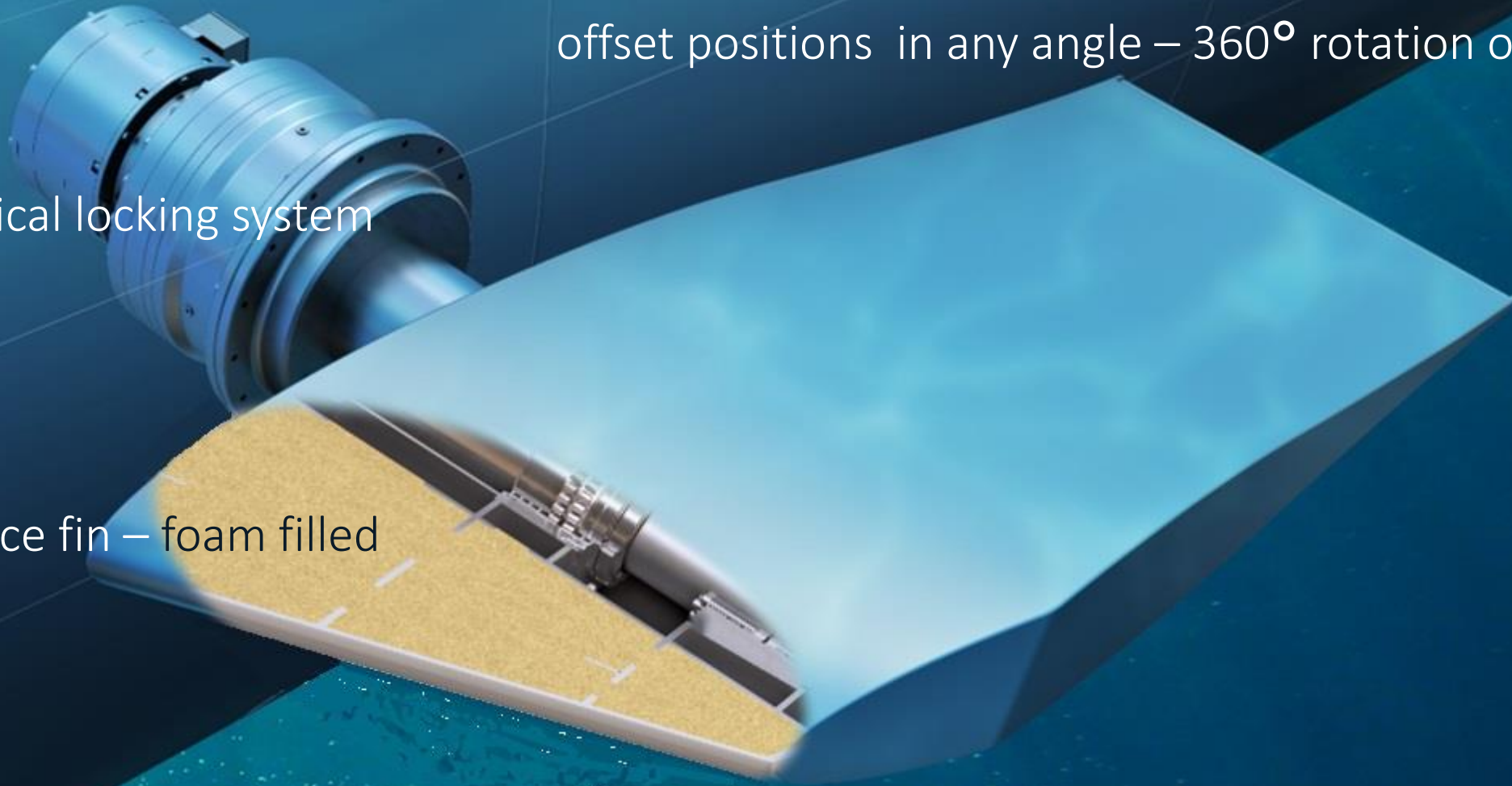
# EFZ key facts

offset positions in any angle – 360° rotation of fin

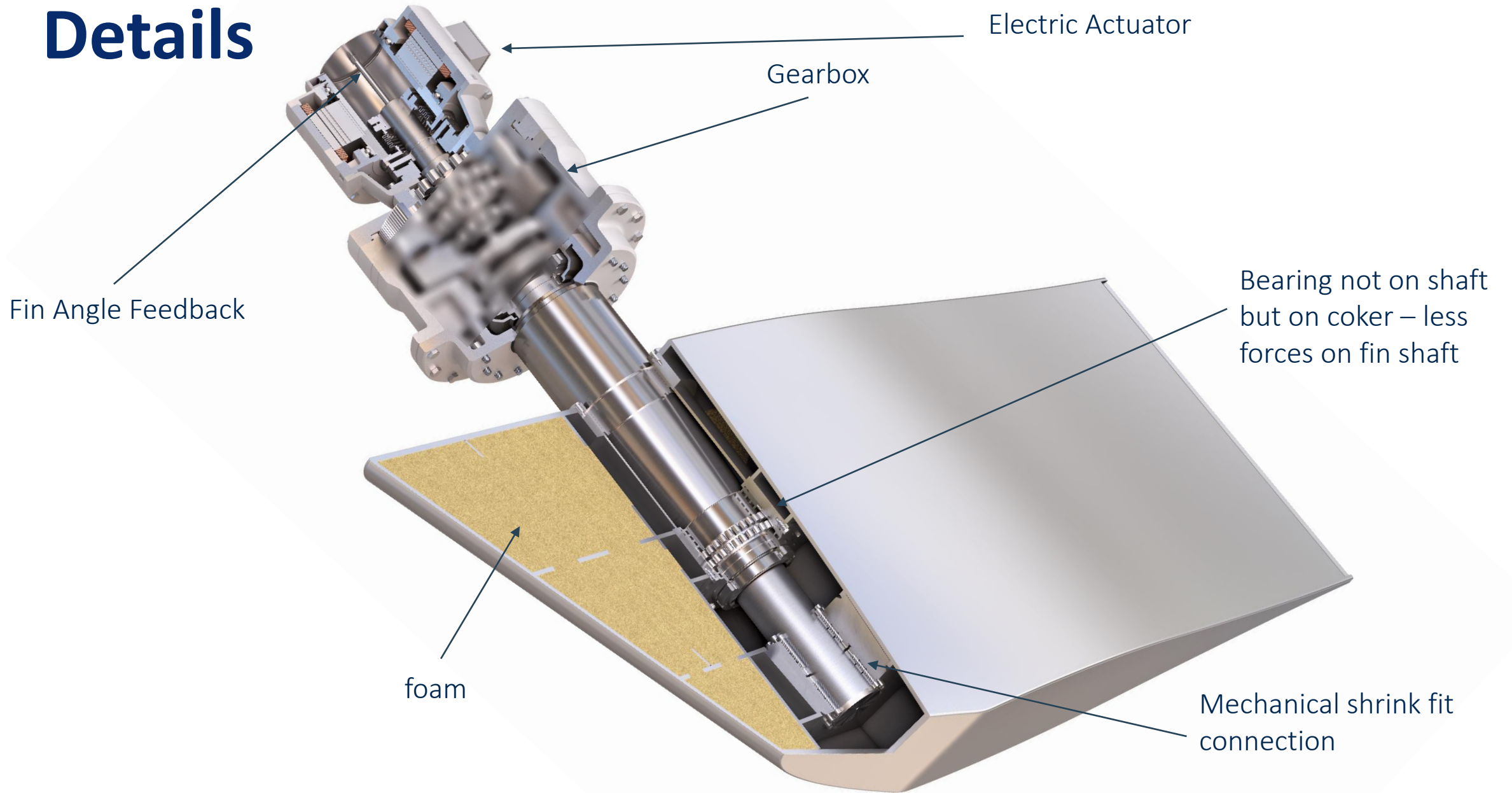
Mechanical locking system

Single piece fin – foam filled

High efficiency fin shape - Fin sizes from 4,5 until 10 sqm

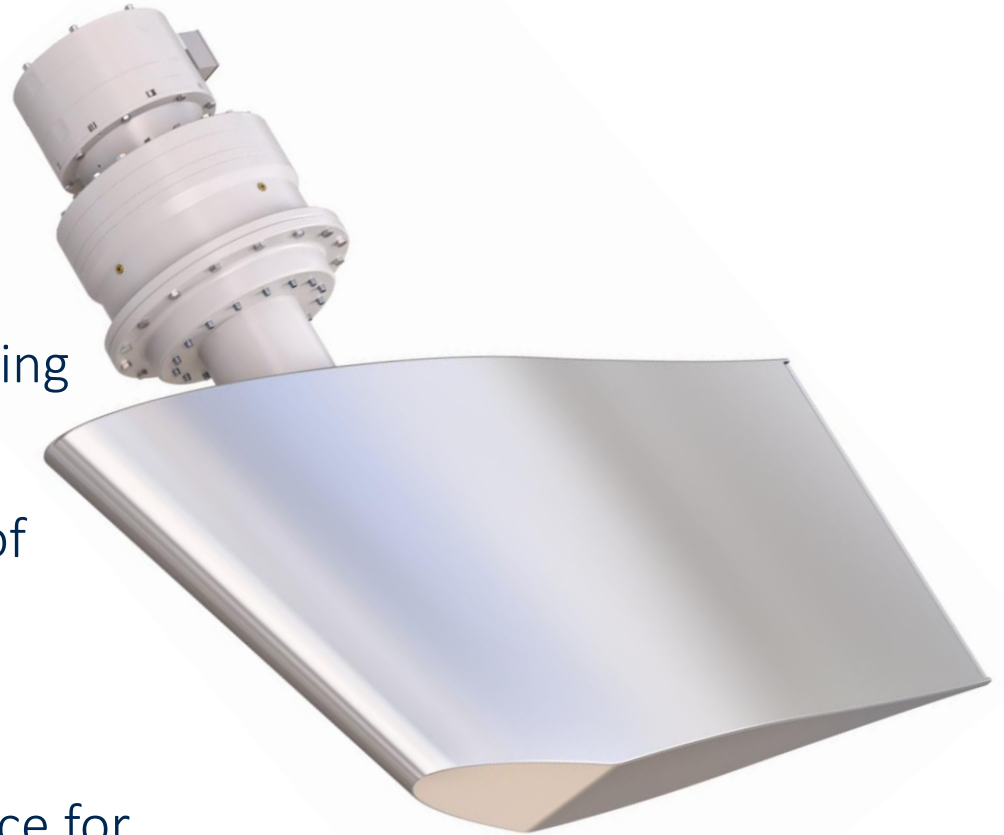


# Details



# Benefits

- **Silent operation:** Low vibration and reduced noise for an even more peaceful voyage
- **Efficiency:** No energy conversion needed from electric to hydraulic
- **Reversing of fins:** Can be turned 180° - unrestricted speed astern – no ahead movement of vessel at anchor – heading support (follow the sunset)
- **Recuperation:** Less power consumption due to buffering of energy by high-tech recuperation system
- **Low maintenance:** Due to few moving parts
- **Flexible arrangement:** Compact design, creating more space for equipment



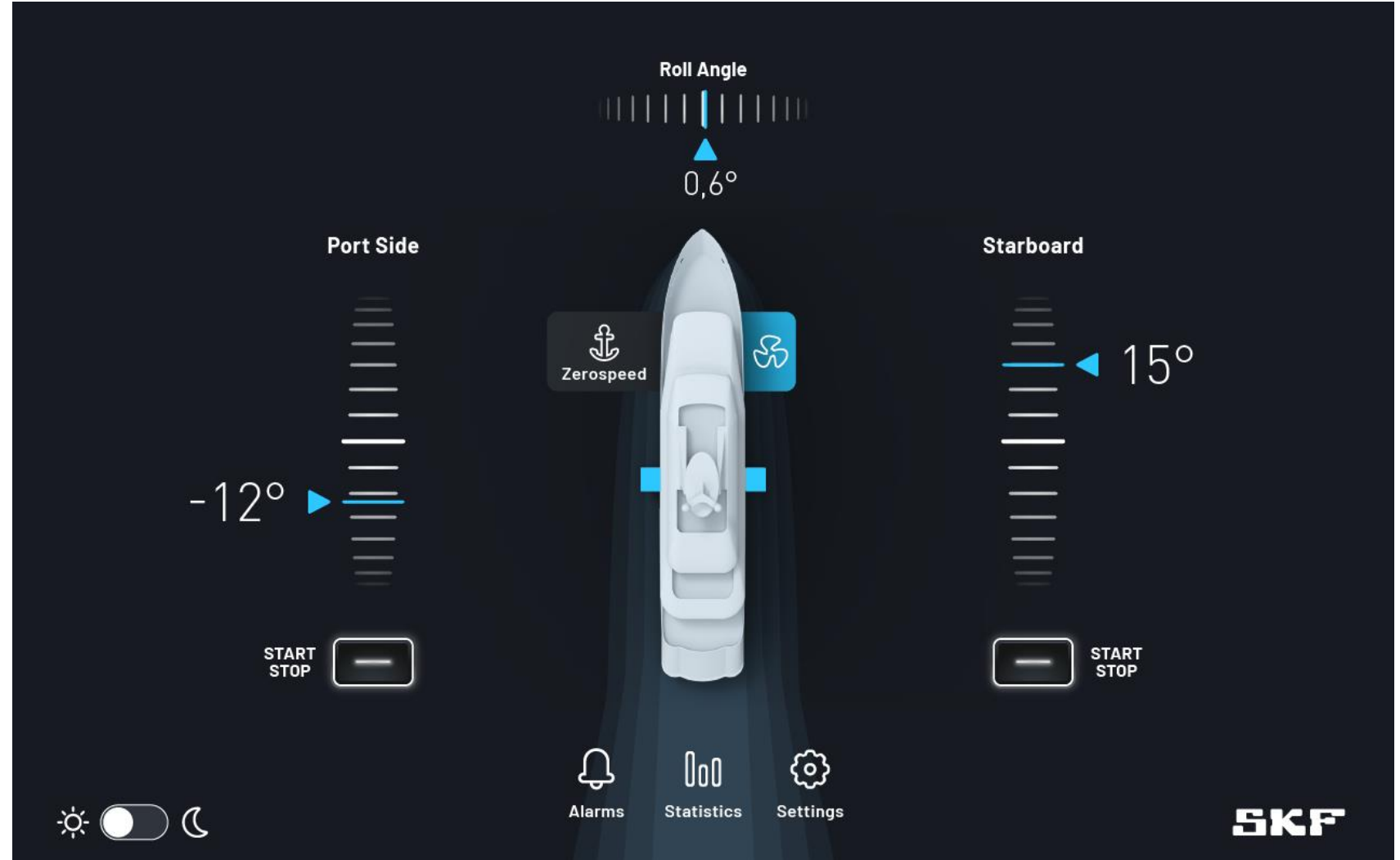
# Switchboard

- Integrated air conditioning
- Alternatively connection to vessels A/C
- Switchboard design by SKF
- Switchboard integration and installation into vessel by shipyard
- Set up, commissioning by SKF specialists
- Integrated recuperation system
- Connection to vessels' system:
  - electric power
  - Cooling water (20°C)



# Graphical User Interface

- State of the art user interface
- Night panel
- Maintenance overview page
- Remote access capability
- Integrated interactive troubleshooting



# Comparism to SKF hydraulic system

	eFZ400	FZ400
<b>Dimensions (mm)</b>		
<b>Actuator:</b> Diameter x Height	900 x 1100	1000 x 600
<b>FCC:</b> Length x Width x Height	approx. 3200 x 500 x 2000	2 x 1000 x 300 x 1400
<b>HPU (+oil pan)</b> Length x Width x Height	-	2 x 2200 x 1200 x 1700
<b>Weight (kg)</b> Compared for electrical and hydr. Systems. Remaining weights (e.g. fin, shaft, trunk etc.) is not mentioned, as weights nearly the same for both systems		
<b>Actuator:</b>	approx. 2 x 2000	approx. 2 x 1250
<b>FCC:</b>	approx. 1200	approx. 2 x 150
<b>HPU:</b>	-	2 x 2200
<b>In total (2 fin setup)</b>	approx. 5200	approx. 7200
<b>Electrical load:</b>	Will be under the consumption of a comparable FZ stabilizer due to the better system efficiency	Depending on vessels parameters



# Yacht Portfolio



Vibration measurement, and  
Automatic lubrication solutions

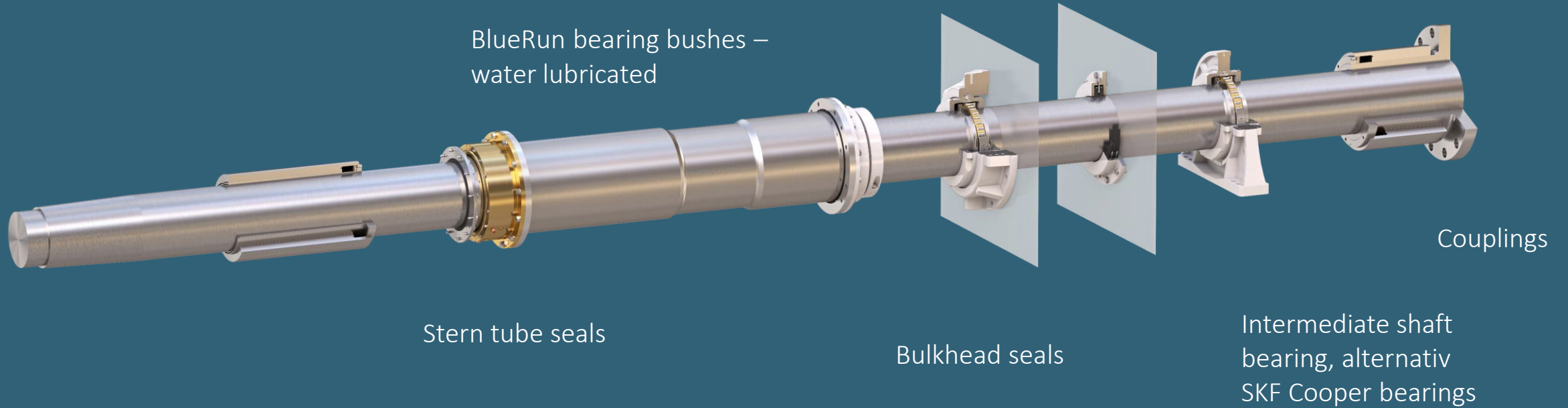


Fin stabilizers

Rotary vane and piston  
type steering gear

Bilge water separators  
and ballast water  
treatment

# Yacht Portfolio



# SKF®

Authorised Distributor



t: +44 1264 860186

e: [spares@simplexturbulo.com](mailto:spares@simplexturbulo.com)

STC is a member of

